

PHILIPS

hue personal wireless lighting






signify

Philips Hue MR16 transformers list by region



This document is for information purposes and reference to specific transformers does not mean they are endorsed by Signify. The results provided by Signify are only indicative and although attempted to provide accurate results at the time of publishing; lab test conditions may vary from actual applications and the information provided is “as is” and “as available”. Signify gives no warranties regarding these and assumes no legal liability or responsibility for any loss or damage resulting from the use of information given herein. Please read this transformer compatibility report before installing Philips Hue MR16 lamps.

Legend explanation

-  **Recommended:** Transformer model has been tested and is functionally OK (performance, flickering and noise) and the combination of Hue MR16 and transformer passed EMC approbation.
-  **Tested:** Transformer model has been tested and it is functionally Ok (performance, flickering and noise) but the combination of Hue MR16 and transformer can possibly disturb other products nearby (EMC not compliant).
-  **Not compatible:** Transformer model has failed lab testing based on pre-defined safety and functional criteria.
-  **Not recommended/overload:** Number of lamps may surpass the recommended maximum wattage of the transformer model. Please refer to recommended LED wattage and number of lamps.
-  **Not tested:** Transformer model has not been tested. Data is unavailable / no recommendation can be derived.

Philips Hue MR16 transformer list, North America



KEY

	Recommended
	Tested
	Not compatible
	Not Recommended / overload
	Not tested

This document is for information purposes and must be treated as recommendation. Signify attempted to provide best results, results are generated in lab conditions and might contain faults

MR16 WCA	Transformer					Number of lamps without physical dimmer				
	No	Brand	Model	Watt	LED Watt	1	2	3	4	5
 <p>929003575501</p>	1	LIGHTTECH	LET75	75	15	T	T	NR	NR	NR
	2	LIGHTTECH	LET-60	60	12	T	T	NR	NR	NR
	3	LIGHTTECH	LET-60-LW	60	12	T	T	NR	NR	NR
	4	KEYSTONE	KTET-75-1-SCP-DIM-HV-AL	75	15	T	T	NR	NR	NR
	5	KEYSTONE	KTET-150-1-SCP-DIM	150	30	○	○	○	○	○
	6	KEYSTONE	KTET-60-1-WC-F	60	12	T	T	NR	NR	NR
	7	KEYSTONE	KTET-60-1-SCP-DIM-AL	60	12	T	T	NR	NR	NR
	8	HATCH	RS12-150	150	30	T	T	T	T	T
	9	HATCH	RS12-60M-LED	60	60	T	T	T	NT	NT
	10	HATCH	RS12-80M	80	16	T	T	NR	NR	NR
	11	HATCH	RS12-60M	60	12	T	T	NR	NR	NR
	12	HATCH	RS12-15M-LED†	15	15	T	T	NR	NR	NR
	13	Tluminix	RP60	60	12	T	T	NR	NR	NR
	14	WAC LIGHTING	EN-1260-R2	1-60	12	T	T	NR	NR	NR

Philips Hue MR16 transformer list, Europe

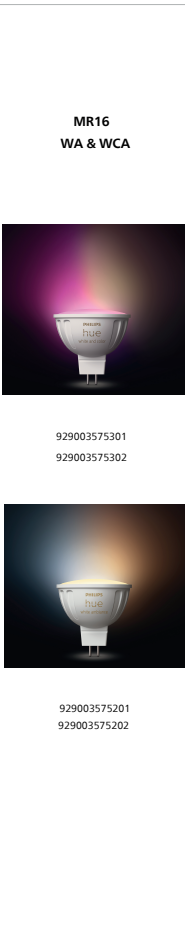


KEY

	Recommended
	Tested
	Not compatible
	Not Recommended / overload
	Not tested

This document is for information purposes and must be treated as recommendation. Signify attempted to provide best results, results are generated in lab conditions and might contain faults

No	Transformer				Number of lamps without physical dimmer								
	Brand	Model	Watt	LED Watt	1	2	3	4	5	6	7	8	9
1	Osram	111593 ET PARROT 70/220-240	20-70	4-14	T	T	NR	NR	NR	NR	NR	NR	NR
2	TCI	119617 ROUND 70	20-70	4-14	T	T	NR	NR	NR	NR	NR	NR	NR
3	TCI	119850 Wolf 150	30-150	6-30	NC	T	T	T	T	NR	NR	NR	NR
4	BELID	130318105W	35-105	7-20	T	T	T	NR	NR	NR	NR	NR	NR
5	Niko	320-00121	20-70	4-14	T	T	NR	NR	NR	NR	NR	NR	NR
6	SLV	461060 Micro 60 PFS	20-60	4-12	T	T	NR	NR	NR	NR	NR	NR	NR
7	SLV	461157, FN III	50-150	10-30	T	T	T	T	NC	NR	NR	NR	NR
8	Osram	927019 HTL 105/230-240	35-105	7-20	NC	T	T	NR	NR	NR	NR	NR	NR
9	Osram	927026 HTL 225/230-240	50-225	10-45	NC	NC	T	T	T	T	T	NR	NR
10	Philips	Certaline 105	35-105	7-20	R	R	R	NR	NR	NR	NR	NR	NR
11	Philips	Certaline 60	20-60	4-12	T	T	NR	NR	NR	NR	NR	NR	NR
12	Vossloh Schwabe	EST 105	20-105	4-20	T	T	T	NR	NR	NR	NR	NR	NR
13	Vossloh Schwabe	EST 60/12.635	10-60	4-12	T	T	NR	NR	NR	NR	NR	NR	NR
14	Vossloh Schwabe	EST 70/12.380	20-70	4-14	T	T	NR	NR	NR	NR	NR	NR	NR
15	OSRAM	ET-PARROT 105	35-105	7-20	T	T	T	NR	NR	NR	NR	NR	NR
16	OSRAM	Halotronic HTM 105	35-105	7-20	T	T	T	NR	NR	NR	NR	NR	NR
17	OSRAM	Halotronic HTM 70 (new type)	20-70	4-14	T	T	NR	NR	NR	NR	NR	NR	NR
18	OSRAM	HTM 150	50-150	10-30	NC	T	T	T	T	NR	NR	NR	NR
19	RELCO	ICE 105 PFS TH	20-105	4-20	T	T	T	NR	NR	NR	NR	NR	NR
20	RELCO	ICE 200 PFS TH	100-200	20-40	NC	NC	T	T	T	T	T	NR	NR
21	RELCO	ICE60 PFS TH 60W	10-60	4-12	T	T	NR	NR	NR	NR	NR	NR	NR
22	EVN	MINIJOEKER 70(T27/10)	20-70	4-14	NC	T	NR	NR	NR	NR	NR	NR	NR
23	TCI	Pico Wolf 105	20-105	4-20	T	T	T	NR	NR	NR	NR	NR	NR
24	TCI	PICO Wolf 60	10-60	4-12	NC	NC	NR	NR	NR	NR	NR	NR	NR
25	Philips	Primaline 105	35-105	7-20	T	T	T	NR	NR	NR	NR	NR	NR
26	Philips	Primaline 150	50-150	10-30	NT	NT	NT	NT	NT	NT	NT	NT	NT
27	Philips	Primaline 70	20-70	4-14	T	T	NR	NR	NR	NR	NR	NR	NR
28	RELCO	RN1684 FOX 150 PFS TH	10-60	2-12	T	T	NR	NR	NR	NR	NR	NR	NR
29	Jung	SMT105F	20-105	4-20	NT	NT	NT	NT	NT	NT	NT	NT	NT
30	Jung	SMT70Q SMT70Q	20-70	4-14	T	T	NR	NR	NR	NR	NR	NR	NR
31	SEET	STE 70VA 7429	20-70	4-14	T	T	NR	NR	NR	NR	NR	NR	NR
32	EVN	TAB 70 (3310)	20-70	4-14	NC	NC	NR	NR	NR	NR	NR	NR	NR
33	Paulmann	Trafo Halo + LED 0-65W - 97767	10-65	0-40	T	T	NR	NR	NR	NR	NR	NR	NR
34	GIRA	tronic trafo	20-105	4-20	NC	NC	NC	NR	NR	NR	NR	NR	NR
35	ACTEC	ULTRA70(70W)	0-70	0-14	T	T	NR	NR	NR	NR	NR	NR	NR
36	Govena	YT105	0-105	0-40	T	T	T	NR	NR	NR	NR	NR	NR
37	Varilight	YT105L	20-105	0-20	T	T	T	NR	NR	NR	NR	NR	NR
38	Varilight	YT150	0-150	0-30	T	T	T	T	T	NR	NR	NR	NR
39	Varilight	YT50L	20-50	0-10	T	T	NR	NR	NR	NR	NR	NR	NR
40	Govena	YT60	0-20	0-20	T	T	T	NT	NT	NT	NT	NT	NT
41	Varilight	YT70L	20-70	0-14	T	T	NR	NR	NR	NR	NR	NR	NR



Philips Hue MR16 transformer list, Rest of the world



KEY

	Recommended
	Tested
	Not compatible
	Not Recommended / overload
	Not tested

This document is for information purposes and must be treated as recommendation. Signify attempted to provide best results, results are generated in lab conditions and might contain faults

MR16 WA & WCA		Transformer				Number of lamps without physical dimmer					
		No	Brand	Model	Watt	LED Watt	1	2	3	4	5
	929003575701	1	DETA	DET020(15W)	15W max	0-15					
	929003575601	2	HPM	MTECOUGAR60(60W)	60VA Max	0-12					
		3	Philips	ET-E 10(10W)	2-10W	2-10					
		4	Philips	ET-S 15(15W)	2-15W	2-15					

Notes



Transformer:

- 1) Transformer load is limited to 20% of the halogen rating unless other value recommended by the transformer manufacturer. Transformers designed for LED loads are not subjected to this de-rating rule.
- 2) Number of Lamps = (halogen transformer Watts x 0.2) / (Lamp Watts).
 - 2a) For example: Philips Certaline 105W*0.2/6.5W = 3 lamps per transformer. 6.5W is the maximum wattage for Hue MR16.
- 3) Tested from one lamp to max loading quantity. A number of LED light sources outside the listed range may result in less optimal behavior.
- 4) If transformer is not on the list, Hue MR16 can only be used with LED transformers with a load range from 0W to max wattage.
 - 4a) For example: LED transformer (0W-15W) = Connect with 2 lamps max.
 - 4b) Wattage of the lamps may not exceed the maximum wattage of the LED transformer.
- 5) Signify / Philips Hue are not responsible for any failure and/or complaint beyond compatible transformers' specifications.

Dimmer:

- 1) Dimmable only with Hue compatible devices.
- 2) Signify / Philips Hue are not responsible for any failure and/or complaint resulting from the use of physical dimmers.